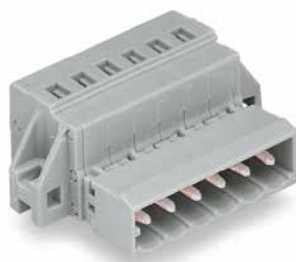
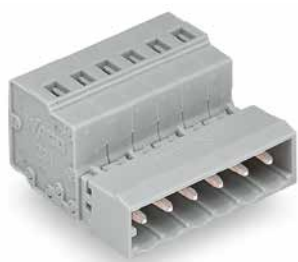


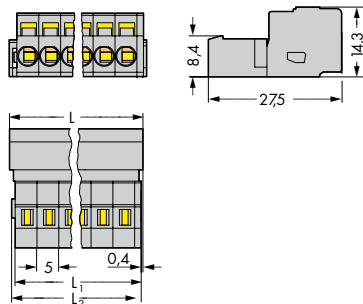
# 1-Conductor Male Connectors

Pin Spacing: 5 mm

MCS MIDI Classic



Dimensions (in mm):



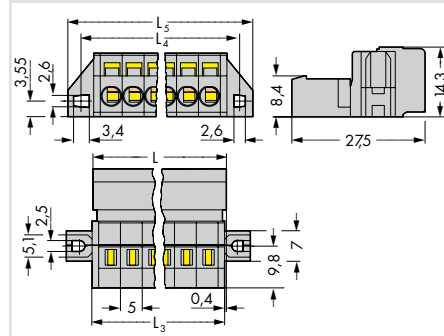
$$L = (\text{pole no.} - 1) \times \text{pin spacing} + 8.2 \text{ mm}$$

$$L_1 = L - 1.7 \text{ mm}$$

$$L_2 = L - 1.2 \text{ mm}$$

1-conductor male connector, gray,  
5 mm (0.197 inch) pin spacing

Dimensions (in mm):



$$L = (\text{pole no.} - 1) \times \text{pin spacing} + 8.2 \text{ mm}$$

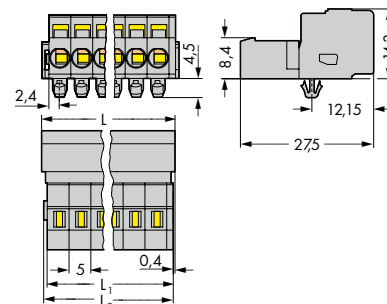
$$L_3 = L - 0.2 \text{ mm}$$

$$L_4 = L_3 + 5.8 \text{ mm}$$

$$L_5 = L_3 + 11.8 \text{ mm}$$

1-conductor male connector,  
with mounting flanges, gray,  
5 mm (0.197 inch) pin spacing

Dimensions (in mm):



$$L = (\text{pole no.} - 1) \times \text{pin spacing} + 8.2 \text{ mm}$$

$$L_1 = L - 1.7 \text{ mm}$$

$$L_2 = L - 1.2 \text{ mm}$$

1-conductor male connector,  
with snap-in mounting feet,  
for 0.6 ... 1.2 mm plate thickness,  
3.5 mm Ø mounting holes, gray,  
5 mm (0.197 inch) pin spacing

Pole No.	Item No.	Pack. Unit
2	231-602	100
3	231-603	100
4	231-604	100
5	231-605	50
6	231-606	50
7	231-607	50
8	231-608	50
9	231-609	50
10	231-610	50
11	231-611	25
12	231-612	25
13	231-613	25
14	231-614	25
15	231-615	25
16	231-616	25
17	231-617	25
18	231-618	25
19	231-619	10
20	231-620	10
21	231-621	10
22	231-622	10
23	231-623	10
24	231-624	10

Pole No.	Item No.	Pack. Unit
2	231-602/019-000	100
3	231-603/019-000	50
4	231-604/019-000	50
5	231-605/019-000	50
6	231-606/019-000	50
7	231-607/019-000	50
8	231-608/019-000	50
9	231-609/019-000	25
10	231-610/019-000	25
11	231-611/019-000	25
12	231-612/019-000	25
13	231-613/019-000	25
14	231-614/019-000	25
15	231-615/019-000	25
16	231-616/019-000	10
17	231-617/019-000	10
18	231-618/019-000	10
19	231-619/019-000	10
20	231-620/019-000	10
21	231-621/019-000	10
22	231-622/019-000	10
23	231-623/019-000	10
24	231-624/019-000	10

Pole No.	Item No.	Pack. Unit
2	231-602/018-000	100
3	231-603/018-000	100
4	231-604/018-000	100
5	231-605/018-000	50
6	231-606/018-000	50
7	231-607/018-000	50
8	231-608/018-000	50
9	231-609/018-000	50
10	231-610/018-000	50
11	231-611/018-000	25
12	231-612/018-000	25
13	231-613/018-000	25
14	231-614/018-000	25
15	231-615/018-000	25
16	231-616/018-000	25
17	231-617/018-000	25
18	231-618/018-000	25
19	231-619/018-000	10
20	231-620/018-000	10
21	231-621/018-000	10
22	231-622/018-000	10
23	231-623/018-000	10
24	231-624/018-000	10

Cutout dimensions, see page 510, Table 1

Available upon request (depending on quantity required):

- Gold-plated or partially gold-plated contact surfaces

Depending on the version requested, "item no. suffix ... /010-000" is added to the "basic item no."